



Key Largo 36



Novi dizajn, nove boje

Zamislite osjećaj izazivanja mora i užitek ljuljanja valova, slobodu jednog opena umotanog u luksuz cruisera, veličanstvenu snagu i apsolutnu udobnost i sve to na samo 11.5 m dužine.

Ovaj predvodnik Key Largo linije sa svoja 3 vanbrodska motora i snagom svaki od max. 350 ks, mami uzdahe. Osim iznimno atraktivnih Yamaha motora u bijeloj boji Key Largo 36 sada dolazi sa novim mnogo bogatijim paketima navigacijske opreme koji opcijски uključuju: autopilot, GPS Raymarine, Chartplotter E 120, Fish Finder DSM 300, radar, a jamče još uzbudljiviju plovidbu.

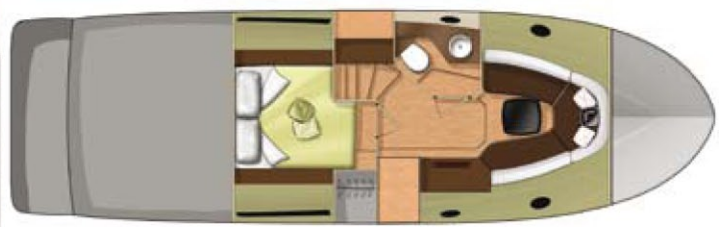
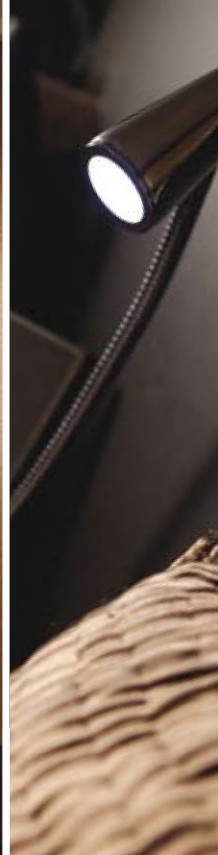
U 2012. Sessa predstavlja novu paletu boja i nove materijale koji još više naglašavaju sportsku liniju ovog ljepotana. Novi Key Largo 36 ponosi se iznimnim bojama trupa – snažnom crnom i sofisticiranom srebrnom; završnim detaljima u crnoj koži i kombinaciji boja u tonu vrhnja i vanilije, a sve to kako bi se naglasila elegancija ovog plovila.

New design, new colors

Imagine the emotion of challenging the sea and the pleasure of being gently rocked by the waves. Imagine an exhilarating power combined with absolute comfort. Imagine the freedom of an open enveloped in the luxury of a cruiser. All that on a boat of 11.5 m of length.

Flagship of the Key Largo range with three outboards maximum 350 HP each, Key Largo 36 is an eye catcher. Besides exceptional white Yamaha outboards, the equipment of Key Largo 36 now includes the instrument panel's electronic accessories (autopilot, GPS Raymarine Chartplotter E120, Fish Finder DSM300, radar) that make cruising even more exhilarating.

In 2012, Sessa presents new range of colours and new materials that further emphasize the sport line of this beauty. New Key Largo 36 is proud of the remarkable hull colours - intense black and sophisticated silver, and of finishing in black leather and in combination of cream and vanilla colours that spread the elegance.



TEHNIČKI PODACI / TECHNICAL SPECIFICATIONS

DUŽINA PREKO CIJELOG BRODA / LOA	11.50 m
ŠIRINA / BEAM	3.50 m
MAX SNAGA MOTORA / MAX ENGINE POWER	max. 1050 ks/hp
OSOBE / PEOPLE ON BOARD	12
TEŽINA / WEIGHT	6000 kg
SPREMIK GORIVA / FUEL TANK	1097 l
SPREMIK VODE / WATER TANK	230 l
CRNI TANK / BLACK WATER	95 l

Key Largo 36 karakterizira iznimna funkcionalnost i udobnost. Prekrasna paluba u tikovini, potpuno opremljena kuhinja sa roštiljem i hard-top s električnim binimijem koji stvara pravu sjenicu i zaklon od sunca samo su neki od detalja koji ovaj brod čine jedinstvenom oazom opuštanja.

Za nezaboravna krstarenja Key Largo 36 nudi iznimno prostrani lounge salon elegantnog dizajna koji se pretvara u vlasničku kabinu, udobnu spavaću sobu dekoriranu najfinijim materijalima u kombinaciji kože i tkanine, te funkcionalnu kupaonicu.

Nova light verzija ovog ljepotana sa novim bojama trupa i interijera nesumnjivo će oduševiti i najizbirljivije pobornike stila i dizajna.

Key Largo 36 is most functional and comfortable. A beautiful teak deck, comfortable kitchen-barbecue area, hard-top option with a spacious electric awning with nebulisation, are only few of numerous details that make this boat unique oasis for relaxation.

For enjoyable cruising, the Key Largo 36 offers a vast indoor lounge in elegant materials that can be transformed into owners cabin, a large double cabin furnished in the finest leather and texture and a spacious bathroom.

New, light version of this beautiful vessel with new hull and interior colours will most certainly amaze even the those who the highest standards as far as the style and design are concerned.